



Meeting	Cabinet Member for Healthy Communities Decision Day
Date and Time	Thursday, 12th June, 2025 at 5.00 pm.
Venue	Walton Suite, Guildhall, Winchester and streamed live on YouTube at <a href="http://www.youtube.com/winchestercc">www.youtube.com/winchestercc</a>

**Note:** This decision day is being held in person at the location specified above. Members of the public should note that the meeting will be streamed live to the council's YouTube channel ([www.youtube.com/winchestercc](http://www.youtube.com/winchestercc))

A limited number of seats will be made available at the above named location however attendance must be notified to the council at least 3 working days before the decision day. Please note that priority will be given to those wishing to attend and address the decision day over those wishing to attend and observe.

## AGENDA

### PROCEDURAL ITEMS

#### 1. Disclosure of Interests

To receive any disclosure of interests from Councillors or Officers in matters to be discussed.

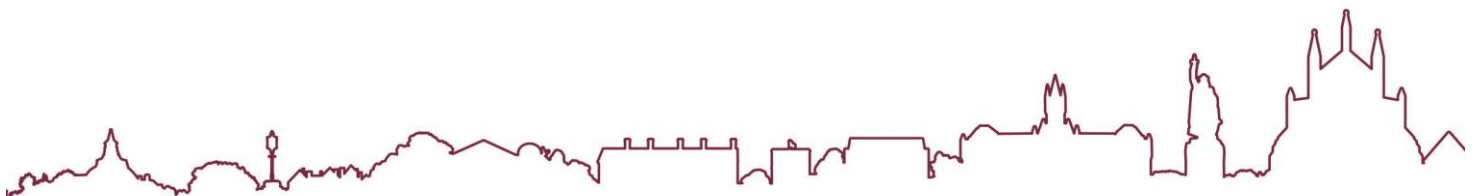
Note: Councillors are reminded of their obligations to declare disclosable pecuniary interests (DPIs), other registerable interests (ORIs) and non-registerable interests (NRIs) in accordance with the Council's Code of Conduct.

### BUSINESS ITEMS

#### 2. Public Participation

– to note the names of members of the public wishing to speak on items for decision

*Note: members of the public wishing to speak about a particular agenda item are required to register three working days in advance if they wish to speak at a Cabinet Member Decision Day.*



Members of the public and visiting councillors may speak at decision days on a specific item due for decision, provided they have registered to speak three clear working days in advance. Please contact Democratic Services by **5pm on Friday, 6 June 2025** via [democracy@winchester.gov.uk](mailto:democracy@winchester.gov.uk) or (01962) 848 264 to register to speak and for further details.

3. **Visiting Councillors Representation**

To note any request from visiting councillors to make representations on an item for decision.

*Note: Councillors wishing to speak about a particular agenda item are required to register three working days in advance if they wish to speak at a Cabinet Member Decision Day. Councillors will normally be invited by the Chairperson to speak during the appropriate item (after the Cabinet Member's introduction (and any comments from the leading officer) and any public participation).*

4. **Health Priorities Statement (DD88) (Pages 5 - 26)**

**Laura Taylor**  
**Chief Executive**

All of the Council's publicly available agendas, reports and minutes are available to view and download from the Council's [Website](#) and are also open to inspection at the offices of the council. As part of our drive to minimise our use of paper we do not provide paper copies of the full agenda pack at meetings. We do however, provide a number of copies of the agenda front sheet at the meeting which contains the QR Code opposite. Scanning this code enables members of the public to easily access all of the meeting papers on their own electronic device. Please hold your device's camera or QR code App over the QR Code so that it's clearly visible within your screen and you will be redirected to the agenda pack.



4 June 2025

Agenda Contact: Claire Buchanan, Senior Democratic Services Officer Email: [cbuchanan@winchester.gov.uk](mailto:cbuchanan@winchester.gov.uk) 01962 848 438

## **TERMS OF REFERENCE**

Cabinet Member for Healthy Communities Decision Day – Included within the Council's Constitution (Part 3, Section 2)

### **Public Participation**

Representations will be limited to a maximum of 3 minutes, subject to a maximum 15 minutes set aside for all questions and answers.:-

To reserve your place to speak, you are asked to **register with Democratic Services three clear working days prior to the decision day** – please see public participation agenda item above for further details. People will be invited to speak in the order that they have registered, subject to the maximum time period allowed for speaking not being exceeded. Public Participation is at the Chairperson's discretion.

### **Filming and Broadcast Notification**

This decision day will be recorded and broadcast live from the Council's You Tube channel. The decision day may also be recorded and broadcast by the press and members of the public – please see the Access to Information Procedure Rules within the Council's Constitution for further information, which is available to view on the [Council's website](#). Please note that the video recording is subtitled, but you may have to enable your device to see them (advice on how to do this is on the meeting page).

### **Disabled Access**

Disabled access is normally available, but please phone Democratic Services on 01962 848 264 or email [democracy@winchester.gov.uk](mailto:democracy@winchester.gov.uk) to ensure that the necessary arrangements are in place.

This page is intentionally left blank

DD88

DECISION TAKER: Cabinet Member for Healthy Communities – Councillor Kathleen Becker

REPORT TITLE: HEALTH PRIORITIES STATEMENT

12 JUNE 2025

Contact Officer: Susan Robbins Tel No: 01962 848 461 Email  
srobbins@winchester.gov.uk

WARD(S): ALL

## PURPOSE

The council has long recognised the importance of healthy communities and has made this a priority in its Council Plan 2025-2030. To understand how best the council's healthy communities outcomes can be achieved, and where to target the available resources, it was agreed that a set of health priorities should be identified for the district. Following a review of the data held in the Hampshire Joint Strategic Needs Assessment (JSNA) a set of health priorities for the district has been identified. The priorities identified are those over which the council has influence, and to which it can meaningfully contribute, and the statement maps the work of the council to the social determinants of health to demonstrate how actions and funding supports the creation of strong, healthy communities.

This report sets out the approach taken to create the Health Priorities Statement and seeks its adoption.

## RECOMMENDATIONS:

That the Cabinet Member for Healthy Communities adopt the:

1. Health Priorities Statement for Winchester district as a record of the health goals, aims and priorities to be used to influence the provision and to direct delivery of council services, facilities and support programmes.

## IMPLICATIONS:

### 1 COUNCIL PLAN OUTCOME

- 1.1 The health of people and communities is affected by a mix of social, environment and economic conditions. A number a council plan outcomes will be encompassed in seeking to sustain and improve the health of Winchester district residents, and in mitigating the factors that contribute to ill-health and poor wellbeing will.
- 1.2 Greener Faster
- 1.3 Ensuring the district is better protected against extreme climate events, helps mitigate the health impacts of heat, cold, flooding, storms etc. Those who are most disadvantaged are less able to respond to these crises, with other factors such as age, gender, and existing underlying health conditions also disproportionately increasing a person's risk and vulnerability. Air pollution directly effects health and seeking to have cleaner air than national targets will reduce its impact.
- 1.4 Thriving Places
- 1.5 A person's ability to gain and sustain well-paid, local employment and to develop skills is affected by their health, and having meaningful, stable employment contributes to a person health. Supporting our local business and providing opportunities to train and gain new skills has a positive impact on the health of the district's residents. Further, planning policy that secures improved facilities within 20 minutes of people's homes, enables people to access support and services within their communities.
- 1.6 Healthy Communities
- 1.7 The Health Priorities Statement contributes to all the outcomes this priorities seeks to achieve: focusing on our most deprived communities; a local voluntary and community sector tackling isolation and supporting those in need; increasing participation in physical activity; access to facilities and spaces for people to play and gather; supporting those most affected by the increased cost of living; and strong health and community infrastructure across the district.
- 1.8 The Health Priorities Statement highlights the two levers the council can use to one, influence the health agencies and partners who commission, fund and deliver health services and infrastructure; and two, to direct the provision of the services and facilities that it delivers and funds.
- 1.9 Good Homes for All
- 1.10 Access to affordable, quality homes is a major factor in people's health and wellbeing and this is identified in the health priorities. It also identifies that the health of certain group such as inclusion groups and the homeless is severely

reduced in comparison to the wider population. Therefore achieving the council outcomes to ensure all council homes are decent, safe, energy efficient and resilient to the effects of climate change; continuing to increase the number of affordable homes across the district; and for every homeless person to secure a permanent home will have significant impacts on health and wellbeing.

## 2 FINANCIAL IMPLICATIONS

- 2.1 This statement identifies the health priorities which can be used to frame the council's current activities and to demonstrate the role it plays in sustaining or improving the health & wellbeing of the district's residents. It maps the current collaboration, service delivery and commissioning that is funded through the council's budget. It does not identify any new budget or expenditure requirements.

## 3 LEGAL AND PROCUREMENT IMPLICATIONS

- 3.1 The council does not have any statutory duty to provide public health functions. It does however with regard to such things as Environmental Health, Housing, Planning, Waste Collection, all of which impact the social determinants of health.
- 3.2 The Health and Social Care Act 2012 empowers upper-tier and unitary authorities to invest in improving local health outcomes and improving the health of their local population and for public health services. The Secretary of State continues to have overall responsibility for improving health – with national public health functions delegated to Public Health England. Primary health needs continue to be met by the NHS.
- 3.3 This statement does not create any procurement implications.

## 4 CONSULTATION AND COMMUNICATION

- 4.1 The health priorities were considered at the Health and Environment Policy committee meeting in September 2024.
- 4.2 The priorities have been shared and discussed with our key strategic partner agencies at meetings of the Winchester Health & Wellbeing Strategic Partnership to ensure alignment.

## 5 ENVIRONMENTAL CONSIDERATIONS

- 5.1 None

## 6 PUBLIC SECTOR EQUALITY DUTY

- 6.1 None

## 7 RISK MANAGEMENT

<b>Risk</b>	<b>Mitigation</b>	<b>Opportunities</b>
<b>Financial Exposure</b> Identifying health priorities places an increased pressure on the council to fund services and interventions.	The statement clearly states that the health priorities are to be used to direct and target existing resources and funding and to influence other agencies in their prime roles of providing health services in the district.	
<b>Exposure to challenge</b> The health priorities identified are challenged by health agencies and service providers.	The priorities are based on analysis of the data within the Hampshire Joint Strategic Needs Assessment.  They have also been considered at the council's Policy Committee meeting and have been shared with local health partnerships.	
Innovation	N/A	
<b>Reputation</b> Inability to demonstrate that the council has acted on the health priorities identified, which impacts confidence in the council.	Evidence of delivery is reported in the council's quarterly performance report which includes a narrative of work undertaken and key performance indicators. This is reviewed at Scrutiny Committee and at Cabinet meetings	
<b>Achievement of outcome</b> The approach identified fails to address the factors that impact health and to sustain and improve the health of local residents.	The framework for identifying priorities and where to target and focus available resources, provides the best chance of having positive health and wellbeing impacts on those people and places most in need.	
Property	N/A	
<b>Community Support</b> The health priorities identified are challenged by local communities and people do not engage in support and initiatives to improve their health and wellbeing.	Adopting a cross-service approach, working on a number of different factors, and by working in collaboration with local agencies and providers, provides the greatest potential to encourage people to engage and benefit from support.	
Timescales	N/A	
Project capacity	N/A	



## 8 OTHER KEY ISSUES

8.1 None

## 9 SUPPORTING INFORMATION:

9.1 The council has long recognised the importance of healthy communities, which has been a priority in its council plan for a number of years. In the 2020-25 Plan it stated it “wanted all residents to live healthy and fulfilled lives, to feel safe and secure in their neighbourhood, and enjoy the recreational and cultural opportunities that the district offers.” In the current Plan this aim is strengthened with the goal “to create strong, healthy communities where our most vulnerable residents feel safe, supported, and can easily access the services they need.” The council already invests significantly in the provision of health and community facilities. This includes the Winchester Sport & Leisure Park, the KGV Pavilion, Chilcomb Pavilion, Winchester City Football Club grounds and the River Park Pavilion. Winchester Town Forum funds the management, refurbishment and improvement of play areas, parks, open spaces and sports pitches and tennis courts. Similarly, the district’s parish councils provide, manage and improve many other local facilities, open spaces, play areas and community hubs.

9.2 As well as these built facilities and spaces there are many services, programmes and projects being delivered that contribute to the health and wellbeing of the district’s residents and support community cohesion and resilience. The health priorities statement maps this work to the social determinants of health to demonstrate how this action supports the creation of strong, healthy communities.

9.3 To understand how best the council’s healthy communities outcomes can be achieved, and where to target the available resources, it was agreed that a set of health priorities should be identified for the district. In addition, these would enable the council to:

- a) Share high level health data to understand how well (or not) the Winchester district is performing in terms of healthy people, lives and places in the context of wider social determinants of health.
- b) Inform and influence the key agencies, institutions and stakeholders involved in supporting health and wellbeing outcomes
- c) Map the council’s work, building on what is already happening and the wider health benefits to be gained.
- d) Recognise the contribution and role the council can (and cannot) play to support, enable and facilitate activities to sustain or improve these priorities.

9.4 In 2024 a review of the data held in the Hampshire Joint Strategic Needs Assessment (JSNA) was undertaken by council officers. The JSNA holds

extensive data sets for a number of health factors that have been grouped into three dimensions, as summarised in the Table 1.

### 9.5 Table 1. Joint Strategic Needs Assessment – dimensions and factors

Healthy Lives	Healthy People	Healthy Places
<div><b>Risk Factors</b></div> <ul style="list-style-type: none"> <li>•Alcohol, Drugs, Smoking,</li> <li>•Weight &amp; Diet</li> <li>•Physical activity</li> <li>•Sexual health</li> </ul>	<div><b>Multimorbidity</b></div> <ul style="list-style-type: none"> <li>•Multiple conditions</li> </ul>	<div><b>Physical environment</b></div> <ul style="list-style-type: none"> <li>•Coastal communities</li> <li>•Green spaces</li> <li>•Access to leisure facilities</li> </ul>
<div><b>Maternity</b></div> <ul style="list-style-type: none"> <li>•Birth weight</li> <li>•Smoking status at delivery</li> </ul>	<div><b>Mental Health &amp; Wellbeing</b></div> <ul style="list-style-type: none"> <li>•Common mental health disorders</li> <li>•Serious mental health illness</li> <li>•Health service referrals</li> </ul>	<div><b>Home environment</b></div> <ul style="list-style-type: none"> <li>•Food security, food banks</li> <li>•Housing affordability, tenure, homelessness</li> </ul>
<div><b>Risk factors for Children</b></div> <ul style="list-style-type: none"> <li>•Children in needs, in protection, looked after</li> <li>•School attainment, exclusions, absences</li> <li>•NEET - not in education, employment or training</li> <li>•Child poverty and youth justice system</li> </ul>	<div><b>Population groups</b></div> <ul style="list-style-type: none"> <li>•Carers</li> <li>•Learning disabilities</li> <li>•Special education needs and disability (SEND)</li> </ul>	<div><b>Social &amp; economic environment</b></div> <ul style="list-style-type: none"> <li>•Social isolation</li> <li>•Digital access, quality</li> <li>•Household income, benefit claims, occupation</li> </ul>
<div><b>Risk factors for Adults</b></div> <ul style="list-style-type: none"> <li>•Employment, low income, zero contracts</li> <li>•Cost of living</li> <li>•Violence and domestic abuse</li> </ul>	<div><b>Older adults</b></div> <ul style="list-style-type: none"> <li>•Hospital admissions, hip fractures</li> <li>•Dementia</li> </ul>	<div><b>Community safety</b></div> <ul style="list-style-type: none"> <li>•Crime, road safety and accidents, licenced premises - gambling and alcohol</li> </ul>
		<div><b>Environment</b></div> <ul style="list-style-type: none"> <li>•Traffic emission</li> <li>•Transport - car ownership , active travel</li> <li>•Energy consumption, renewable electricity, recycling</li> <li>•Air quality</li> <li>•Weather - heat &amp; cold, flooding, storms</li> </ul>

9.6 The findings of the analysis were shared with the Senior Public Health Practitioner at Hampshire County Council and were jointly presented with them to council's Health and Environment Policy Committee in September 2024. At that meeting it was agreed that the health priorities should approved at a Cabinet Member Decision Day. They should also be used to:

- Test against responses to recent residents' survey. Yes – this is included in the statement.
- Contribute to and align with the Hampshire Health and Wellbeing Strategy review. This work is ongoing, with the final Strategy due to be signed off by the Hampshire Health and Wellbeing Board in June.
- Inform the update of Council Plan in 2025. Yes, done.

9.7 The health priorities statement demonstrates the wider health benefits of the council's work and increases understanding across all services of the contribution being made to the wider health of the population. This work and its findings will be used to:

- a) Inform the targeting of our existing services, programmes and support.
  - b) Integrate within council grant eligibility criteria.
  - c) Supporting evidence for external funding bids.
  - d) Drive social media activity related to our wider health improvement objectives.
- 9.8 The priorities identified are those over which the council has influence, and to which it can meaningfully contribute. Continuing to work in collaboration with health and community service providers will be vital for the council achieving its aim of giving residents the chance to improve their physical and mental health and encourage community involvement and well-being throughout the district.
- 10 OTHER OPTIONS CONSIDERED AND REJECTED
- 10.1 Do not publish a health priorities statement for the district. This is rejected as not having an evidence-based set of priorities means that the council cannot best direct its resources to those people and places most in need. It would also mean that the council could not effectively influence health partners and agencies to deliver provision in the district.

#### BACKGROUND DOCUMENTS:-

##### Previous Cabinet/Committee Reports or Cabinet Member Decisions:-

Health Priorities presentation : Health and Environment Policy Committee 19 September 2024.

[Agenda for Health and Environment Policy Committee on Thursday, 19th September, 2024, 6.30 pm - Winchester City Council](#)

##### Other Background Documents:-

Hampshire Joint Strategic Needs Assessment: [Joint Strategic Needs Assessment \(JSNA\) | Health and social care | Hampshire County Council](#)

#### APPENDICES:

Appendix 1. Health Priorities Statement for Winchester District.

This page is intentionally left blank

### Purpose

This statement of health priorities creates a baseline for the council's delivery of support and funding to achieve the outcomes of the Council Plan 2025-2030. A periodic review of the baseline data and our performance against the social determinants of health will be undertaken during the five year life of the Plan to ensure the priorities remain relevant.

This statement of the health priorities for Winchester district serves a number of purposes to:

- Share high level health data to understand how well (or not) the Winchester district is performing in terms of healthy people, lives and places in the context of wider social determinants of health.
- Inform and influence the key agencies, institutions and stakeholders involved in supporting health and wellbeing outcomes
- Map the council's work, building on what is already happening and the wider health benefits to be gained.
- Recognise the contribution and role the council can (and cannot) play to support, enable and facilitate activities to sustain or improve these priorities.

To create our health priorities we have taken a data-led and evidence based approach and considered numerous health-related factors and social determinants of health. The priorities we have identified are those over which we have influence, and to which we can meaningfully contribute. We will continue to work in collaboration with health and community service providers and will engage and empower individuals and communities to build on our strengths and to tackle the challenges we face.

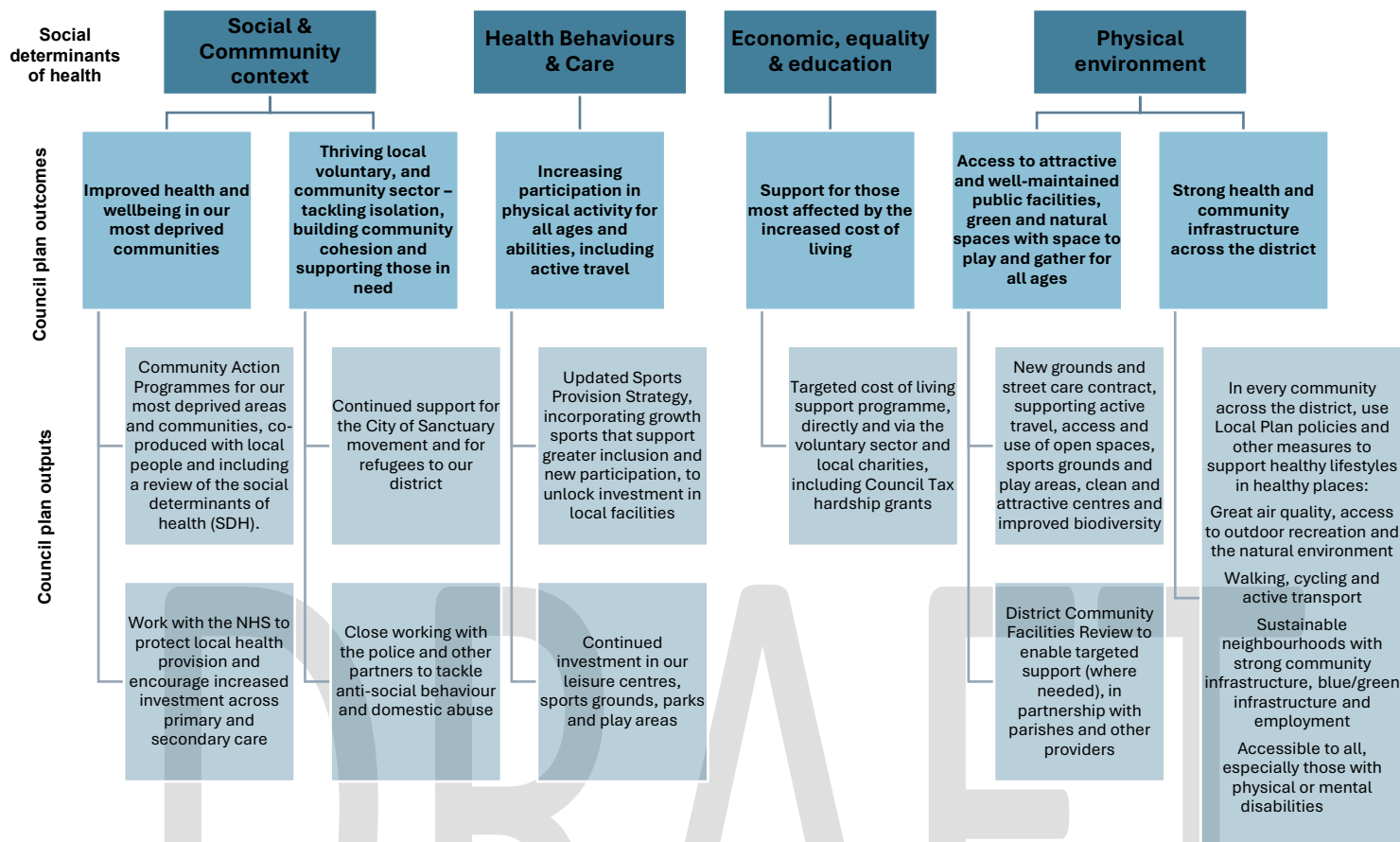
### Council Plan 2025-30

Our health priorities have been identified following a review of the Hampshire Joint Needs Assessment data and were considered at the council's Health and Environment Policy Committee in Autumn 2024. They also align to the Council Plan 2025-30 and help to focus and target our services to those most in need.

### Healthy Communities

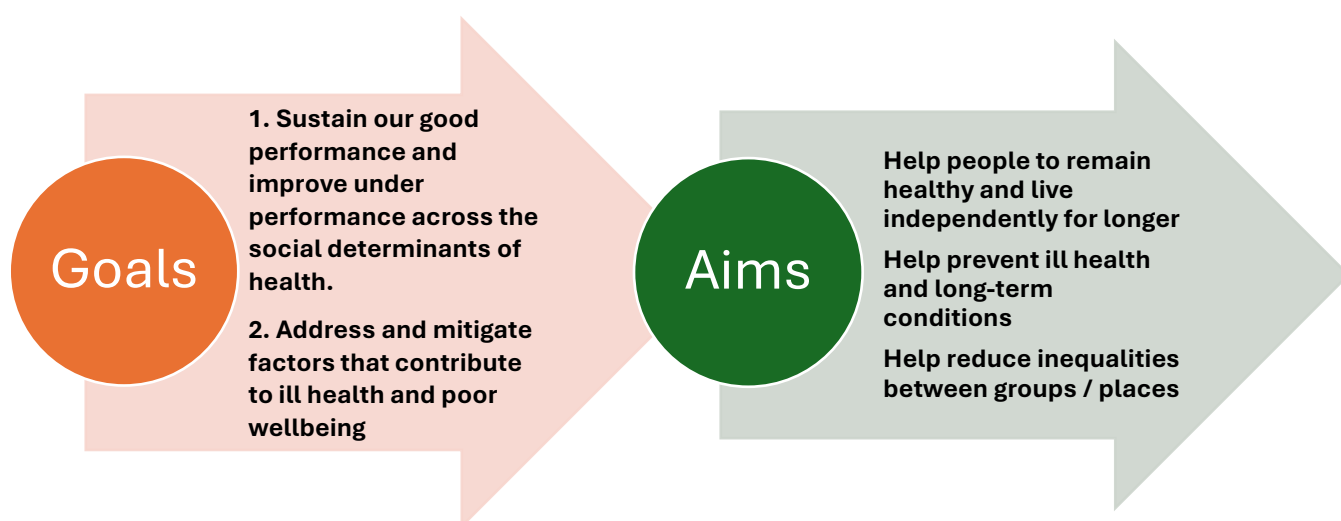
We will seek to create an environment and circumstances that improve the physical and mental health of our residents and encourage community involvement and well-being throughout the district. Our goal is to create strong, healthy communities where our most vulnerable residents feel safe, supported, and can easily access the services they need.

This diagram shows how the outcomes the council is seeking map to the wider social determinant of health.



## Health priorities for Winchester district

The analysis of the health data shows that the residents and places of Winchester district are on the whole healthy, well served and prosperous. There are of course people, communities and places which are not, and for this reason it is important that the council strives to reduce this disadvantage. To direct our efforts in this we have set the following two goals and three aims



To support these goals and aims, fifteen priority areas have been identified that align with both Hampshire County Council's Public Health Strategy themes and the wider social determinants of health.

Priorities	HCC Public Health Strategy Themes	Social Determinants of Health
1. Mental health & wellbeing 2. Inclusion health groups 3. Older people	Healthy People	Health behaviours and care
4. Physical activity 5. Weight & diet 6. Employment & income 7. Cost of living	Healthy Lives	Health behaviours and care Economic, equality and education
8. Access to green space and leisure facilities 9. Housing 10. Social isolation and digital access 11. Crime and community safety 12. Transport and active travel 13. Energy consumption & generation 14. Climate change 15. Air quality	Healthy Places	Physical environment Social and community context

#### Targeting areas of need

The Hampshire Joint Strategic Needs Assessment identified that although Winchester district is an affluent area, there are pockets of deprivation mainly in Winnall and Stanmore. These experience higher rates of crime, higher food insecurity, fuel poverty and social isolation. The more rural areas of the district have higher proportions of the population aged 65 and over, and these areas also had slightly poorer internet infrastructure. Towards the south of the district there are areas with younger households with slightly higher deprivation, greater food insecurity, fuel poverty and exposure to poorer air quality.

Most at risk Areas	Joint Strategic Needs Assessment Topic Areas >2						
<b>Stanmore</b>	Deprivation	Transiency	Food insecurity (5)	Fuel poverty (7)	Social isolation (10)	Mental wellbeing (1)	Income / benefits (6)
<b>Winnall</b>	Deprivation	Food insecurity (5)	Digital (10)	Mental wellbeing (1)	Income / benefits (6)	Heatwaves (14)	
<b>Winchester town centre</b>	Fast food outlets (5)	Social isolation (10)	Crime (11)	Private gardens (8)			
<b>Alresford</b>	Food insecurity (5)	Social isolation (10)	Air quality (15)				
<b>Denmead</b>	Private gardens (8)	Social isolation (10)	Flooding (14)				
<b>Whiteley</b>	Green space (8)	Air quality (15)	Flooding (14)				
<b>Bishop's Waltham</b>	Food insecurity (5)	Income / benefits (6)					
<b>Wickham</b>	Food insecurity (5)	Digital (10)					

(Our health priority number)

## The council's role

We will adopt three approaches to help sustain or improve the health of our residents and to mitigate the factors that contribute to ill health and poor wellbeing.



The council makes significant investment in services and the provision of facilities that contribute greatly to health outcomes.

£30M	revenue expenditure on housing services to council tenants and leaseholders, funded from housing rents and service charges.
£29.4M	on landlord housing services
£3.9M	on community housing services
£6.7M	on environmental services (incl. waste collection)
£1.5M	on community safety & development

Notable examples

### Sport and Play

- Winchester Sport and Leisure Park and Meadowside Leisure Centre
- King George V Pavilion
- Chilcomb Pavilion
- Garrison Ground
- River Park Tennis & 3G Pitch
- New River Park Pavilion
- Play Areas, Skate Parks, Outdoor Gyms & MUGAs

We manage 25 equipped play areas, 3 skate parks, 3 outdoor gyms and 2 MUGAs in the city and surrounding district.





## Housing

- Extra care schemes like Chesil Lodge and in excess of 900 supported tenancies for older persons, over 40 "extra care" tenancies and over 50 units of accommodation for homeless households
- Tenancy Sustainment Service is free and accessible to all of our tenants and private sector residents within the city and wider district. Support available:



The following tables map the council's extensive contribution to good health and positive wellbeing across the district through its actives, partnership, programmes and plans. These are examples and there will be many other examples of work that also support healthy communities.

Health Aim 1	Help people to remain healthy and live independently for longer
Health Priorities	Examples of our activity and contribution
<b>Mental health and wellbeing</b>	<ul style="list-style-type: none"> <li>○ Cultural strategy</li> <li>○ Everyone Active contract to operate and manage our sports and leisure centres</li> <li>○ Community &amp; voluntary sector grants</li> </ul>
<b>Inclusion health groups</b> (Gypsy, Roma or Irish Traveller and Veterans)	<ul style="list-style-type: none"> <li>○ WSLP's GP referral scheme and 50+ club</li> <li>○ Armed forces Covenant</li> <li>○ Local Plan policies</li> <li>○ Liaison with parish councils</li> </ul>
<b>Older adults</b>	<ul style="list-style-type: none"> <li>○ Dementia Friendly Winchester</li> <li>○ Winchester District Older People's Partnership</li> <li>○ Live Longer Better project</li> <li>○ Provision of extra care schemes</li> </ul>
<b>Council Plan outcomes</b>	<b>Improved health and wellbeing in our most deprived communities</b>

<b>Health aim 2</b>	<b>Help prevent ill health and long-term conditions</b>
<b>Health Priorities</b>	<b>Examples of our activity and contribution</b>
<b>Physical activity</b>	<ul style="list-style-type: none"> <li>○ Everyone Active contract to operate and manage our sports and leisure centres</li> <li>○ Schools coaching programme</li> <li>○ Holiday sports coaching</li> <li>○ Park yoga</li> </ul>
<b>Healthy weight and diet</b>	<ul style="list-style-type: none"> <li>○ Access to and promotion of local producers</li> <li>○ Taste of Winchester campaigns</li> <li>○ Sustainable Food Partnership membership</li> </ul>
<b>Well paid jobs and household income</b>	<ul style="list-style-type: none"> <li>○ Green Economic Development Strategy</li> <li>○ First Foot Forward employment course for council tenants</li> <li>○ Tenancy sustainment and income maximisation</li> <li>○ Council and private rented tenants support with budget plans and money management</li> </ul>
<b>Cost of living</b>	<ul style="list-style-type: none"> <li>○ Information, advice and guidance provide through funded support services such as Citizens Advice</li> <li>○ Council Tax Support Fund</li> <li>○ Increase in the income thresholds of the Council Tax Reduction scheme</li> <li>○ Food vouchers, support for food banks and pantries</li> </ul>
<b>Council Plan Outcomes</b>	<b>Increasing participation in physical activity for all ages and abilities, including active travel</b> <b>Support for those most affected by the increased cost of living</b>

Health aim 3	Help reduce inequalities between groups / places	
Health Priorities	Examples of our activity and contribution	
<b>Access to green space and sport facilities</b>	<ul style="list-style-type: none"> <li>○ Open space assessment</li> <li>○ New facilities / spaces in major development areas</li> <li>○ Liaison with parish councils</li> </ul>	<ul style="list-style-type: none"> <li>○ Improving and up-grading facilities, play areas etc.</li> <li>○ Playing Pitch &amp; Facilities Strategy</li> </ul>
<b>Housing</b>	<ul style="list-style-type: none"> <li>○ Local Plan</li> <li>○ Major development Areas</li> <li>○ Tenancy support and engagement</li> </ul>	<ul style="list-style-type: none"> <li>○ Housing Strategy</li> <li>○ Affordable housing</li> <li>○ Homelessness prevention</li> </ul>
<b>Social isolation and digital access</b>	<ul style="list-style-type: none"> <li>○ Social Inclusion Partnership</li> <li>○ Cultural Strategy</li> </ul>	<ul style="list-style-type: none"> <li>○ Community &amp; voluntary sector grants</li> <li>○ Walking groups</li> </ul>
<b>Crime and community safety</b>	<ul style="list-style-type: none"> <li>○ Community Safety Partnership</li> <li>○ Domestic Abuse Housing Alliance improvement project</li> </ul>	<ul style="list-style-type: none"> <li>○ Anti-Social Behaviour Grip Funding</li> <li>○ Violence Against Women and Girls (VAWG) Strategy</li> </ul>
<b>Transport and active travel</b>	<ul style="list-style-type: none"> <li>○ Winchester Movement Strategy</li> <li>○ Carbon Neutrality Action Plan</li> </ul>	<ul style="list-style-type: none"> <li>○ Local Cycling and Walking Infrastructure Plan</li> <li>○ Community Infrastructure Levy funding</li> </ul>
<b>Energy consumption and generation</b>	<ul style="list-style-type: none"> <li>○ Housing Retrofit programme</li> <li>○ Carbon Neutrality Action Plan</li> </ul>	<ul style="list-style-type: none"> <li>○ Local Area Energy Plan</li> <li>○ Low emission vehicles &amp; EV charging points</li> </ul>
<b>Climate Change</b>	<ul style="list-style-type: none"> <li>○ Carbon Neutrality Action Plan</li> <li>○ Nature emergency and assessment of climate impacts</li> </ul>	<ul style="list-style-type: none"> <li>○ Local Nature Improvement Plan &amp; Biodiversity Action Plan</li> <li>○ Tree Strategy</li> </ul>
<b>Air quality</b> (environmental health)	<ul style="list-style-type: none"> <li>○ Air Quality Strategy</li> <li>○ Local Plan</li> </ul>	<ul style="list-style-type: none"> <li>○ Movement Strategy</li> </ul>
<b>Council Plan Outcomes</b>	<b>Access to attractive and well-maintained public facilities, green and natural spaces with space to play and gather for all ages</b> <b>Strong health and community infrastructure across the district</b> <b>Thriving local voluntary, and community sector – tackling isolation, building community cohesion and supporting those in need</b>	

## **Appendices**

### **1. Evidence base and policy mapping**

#### **Wider (Social) Determinants of Health: World Health Organisation**

[Wider Determinants of Health | Fingertips | Department of Health and Social Care](#)

Wider determinants are a diverse range of social, economic and environmental factors which impact on people's health. They're also known as social determinants. These factors are influenced by the local, national and international distribution of power and resources which shape the conditions of daily life. They determine the extent to which different individuals have the physical, social and personal resources to identify and achieve goals, meet their needs and deal with changes to their circumstances

The social determinants of health (SDH) are the non-medical factors that influence health outcomes. They are the conditions in which people are born, grow, work, live, and age, and the wider set of forces and systems shaping the conditions of daily life. The SDH have an important influence on health inequities .....the lower the socioeconomic position, the worse the health.

In February 2024 WHO released new guidance on monitoring the social determinants of health equity.

"We hope this publication will support data-driven decision-making for policymakers and practitioners to improve the health of all populations, and thus be an important tool towards creating fairer societies and healthier lives."

(Operational framework for monitoring social determinants of health equity. Geneva: World Health Organization; 2024. Licence: CC BY-NC-SA 3.0 IGO.)

The domains and subdomains for social determinants of health:

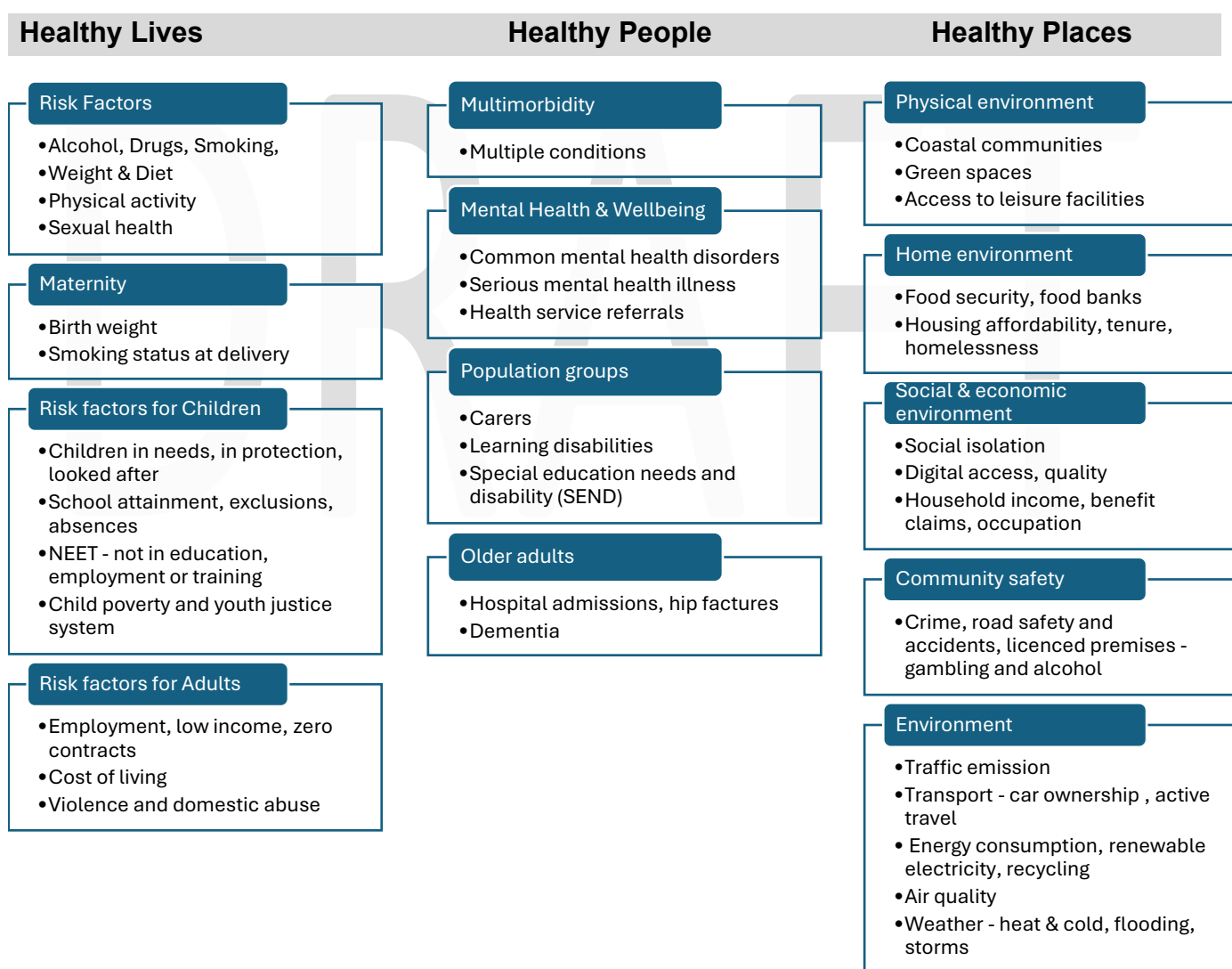
<b>ECONOMIC EQUALITY &amp; EDUCATION</b>	<b>PHYSICAL ENVIRONMENT</b>	<b>SOCIAL AND COMMUNITY CONTEXT</b>	<b>HEALTH: BEHAVIOURS &amp; CARE</b>
Employment Food security Income inequality Poverty Education Access Education outcomes	Air quality and climate Disasters Energy, fuels and technologies Housing Land tenure Road safety Water, Sanitation and Hygiene (WASH) Urbanisation	Conflict, crime and violence Discrimination Forced displacement and migration Gender equality and women's empowerment Healthy ageing Incarceration Social support	Alcohol Physical activity Tobacco Nutrition Health care access and affordability

## Hampshire Joint Strategic Needs Assessment (JSNA)

Hampshire's JSNA looks at the current and future health and wellbeing needs and inequalities within the Hampshire population. It provides a rich data source for assessing and comparing Winchester district's population health across a range of determinants. Data are collated around three dimensions, each of which focusses on a series of related factors:

- Healthy people - Who are the specific groups of people that need additional support?
- Healthy lives - What are the factors and circumstances that affect health?
- Healthy places - How can we create an environment that promotes positive health?

Mapping examples of the social determinants of health, which can influence health equity in positive and negative ways against the Hampshire Joint Strategic Needs Assessment



## Residents Survey 2024. Main survey results

The priorities identified have been tested against the findings of the residents survey 2024. This is to ensure they resonate with our local residents and what they feel is important, and the things the council should be focusing on over the next five years.

### Resident Survey 2024

### Health Priority

#### Most important services

- 38% maintaining & providing public open spaces & toilets ✓
- 37% environmental & health services ✓
- 36% community safety ✓

#### Top things that need improving in the district

- 40% availability of affordable housing ✓
- 32% public transport around district ✓
- 26% cleanliness of open spaces & roadside surfaces ✓

#### Suggested areas of council focus over the next 5 years

- 55% providing affordable housing ✓
- 49% protecting the natural environment ✓
- 44% tackling homelessness ✓
- 43% maintaining attractive open spaces for everyone to enjoy ✓

## Appendix 2 – Analysis of JSNA Data to Identify Health Priorities

### Healthy People

#### Multimorbidity

12.3% of population in the district with 2 or more conditions is lower than Hampshire as a whole (13.6%) – best performing is Hart at 6.6%

Life expectancy for males (82 years) and females (85.5yrs) is better than in Hampshire and England

#### Population groups

Winchester district has a lower percentage (7.4% of pop) of unpaid carers than Hampshire (8%) and fourth lowest of all the county's districts.

The prevalence of learning disabilities in Winchester district is below that of Hampshire and England.

The rate of educational health plans per 1,000 population is one of the lowest in Hampshire.

#### Population groups

##### Inclusion health groups

Winchester district has the highest percentage of population identified as Gypsy, Roma or Irish Traveller (0.4%) and highest proportion of Roma or Irish Traveller population aged 24 or younger (45%)

Winchester is the district where veterans are more likely to report that their life is limited 'a lot' by their disability than those in the general population, at 43%

##### Older people

Ageing population, predicted population growth largest in the 85+ cohort.

Estimated prevalence of dementia is 7.5% of population aged 65+ - fourth highest in Hampshire.

##### Mental health & wellbeing

29% of people reported high anxiety – higher than Hampshire (26.3%) and third highest of all the county's districts

12.5% of people self-reported a low happiness score – higher than Hampshire (9.5%) and fourth highest of the districts.

10.6% of people registered with depression in Winchester district

Factor	Local health performance	Council Influence over outcome	Our Health Priority
<b>Life expectancy</b>			
Healthy life expectancy			✗
Multimorbidity			✗
Multiple long-term conditions			✗
<b>Mental Health &amp; Wellbeing</b>			✗
Impact of COVID-19			✗
Common mental health disorders			✗
Serious mental illness			✓
Self-harm & suicide			✗
<b>COVID-19</b>			
Post COVID and long COVID			✗
<b>Population groups</b>			
Carers			✗
Learning disabilities			✗
Special education needs and disability (SEND)			✗
Inclusion Health Groups			✓
Older adults			✓

#### Our priorities

#### Mental health & wellbeing

#### Inclusion health groups

#### Older people

## Healthy Lives

Performs well

Page 24

### Lifestyle risk factors

Higher percentage of physically active adults and children than Hampshire.

Higher rate of people eating the recommended 5 per day than Hampshire or England.

Better than England for:

- children's weight; smoking rates and rate of alcohol-related mortality.

### Maternity

6.2% of all live births are low in weight in Winchester district - England 6.4% and the South- East 5.6%.

Child mortality in Winchester district is lower than Hampshire and England.

### Risk factors for children

Second lowest proportion (9%) of children living in low- income households.

Second lowest rate (0.6%) in Hampshire of unauthorised absences from school.

### Risk factors for adults

second-best performing district for percentage (8.2%) of jobs paying lower than minimum wage

### Lifestyle risk factors

Sexual health:

- STI diagnosis per 100,000 in the district is 510.49 – the second highest in Hampshire.

- Chlamydia detection rate per 100,000 aged 15-24 is 1333 – the third highest in Hampshire.

### Risk factors for adults

Most serious violence offences per 10,000 for the district is 4.11 – fourth highest in Hampshire.

Under performs

Factor	Local health performance	Council Influence over outcome	Our Health Priority
<b>Lifestyle Risk Factors</b>			
Alcohol, Drugs, Smoking,			✗
Weight & Diet			✓
Physical activity			✓
Sexual health			✗
<b>Maternity</b>			
Birth weight			✗
Smoking status at delivery			✗
<b>Risk factors for Children</b>			
Children in needs, in protection, looked after			✗
School attainment, exclusions, absences			✗
NEET - not in education, employment or training			✗
Child poverty and youth justice system			✗
<b>Risk factors for Adults</b>			
Employment, low income, zero contracts			✓
Cost of living			✓
Violence and domestic abuse			✓

### Our priorities

### Physical activity

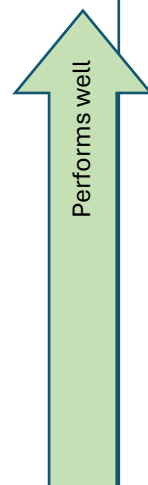
### Weight & diet

### Employment & income

### Cost of living



## Healthy Places



### **Physical environment**

No Winchester district COASTAL communities classified as 'left behind'.

Highest rate in Hampshire of public sports facilities per 10,000 at 20.3 (England 13.2).

### **Home environment**

Lower rate of overcrowded homes 1.6 % (by number of bedrooms) in than Hampshire 2.2%, and England (4.4%).

In 2022/23 the rate of homeless households per 1,000 households was lower in Winchester district (2.6) than Hampshire (3.1) England (6.6).

### **Social & economic environment**

Areas with greater social isolation across Winchester district include Winnall and Stanmore, Alresford and Denmead.

High proportions of people working as managers or directors and in professional occupations

### **Community safety**

79% of residents rated the community they live in as safe; slightly higher than England and Wales (78%)

### **Environment**

The rates of walking and cycling for transport are higher than England and Hampshire.

### **Physical environment**

Worst performing Hampshire district for proportion of homes with a private garden – 85.6% and lower than England - 88.4%

### **Home environment**

Winchester district is the least affordable district in Hampshire, with fewer properties for social or private rent than England.

Slightly higher proportion of households living in fuel poverty (9.1%) than Hampshire (8.2%) and more in the rural areas.

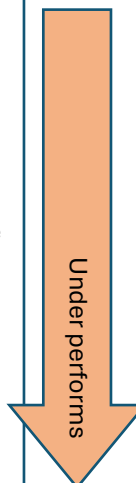
### **Community safety**

Number of road accidents between 2018-22 in Winchester district – 1,449 (second highest in Hampshire) & 2,034 casualties (highest).

### **Environment**

Winchester district has one of the highest domestic energy consumption rates in Hampshire (in 2021) at 63.9 (Kt oil equivalent).

Air pollution is worst in the south of the district, however, there are also be pockets of poor air quality within urban areas of Winchester city.



Factors	Local performance	Council Influence over outcome	Our Health Priority
<b>Physical environment</b>			
Coastal communities			
Green spaces			✓
Access to leisure facilities			✓
<b>Home environment</b>			
Food security, food banks			✗
Housing - affordability, tenure, homelessness			✓
<b>Social &amp; economic</b>			
Social isolation			✓
Digital access, quality			✓
Household income, benefit claims, occupation			✓
<b>Community safety</b>			
Crime, road safety and accidents			✗
Licensed premises - gambling and alcohol			✗
<b>Environment</b>			
Traffic emission			✓
Transport - car ownership, active travel			✓
Energy consumption, renewable electricity, recycling			✓
Air quality			✓
Weather - heat & cold, flooding, storms			✓

### **Our priorities**

**Access to green space and leisure facilities**

**Housing**

**Social isolation and digital access**

**Crime and community safety**

**Transport and active travel**

**Energy consumption & generation**

**Climate change**

**Air quality**

This page is intentionally left blank